



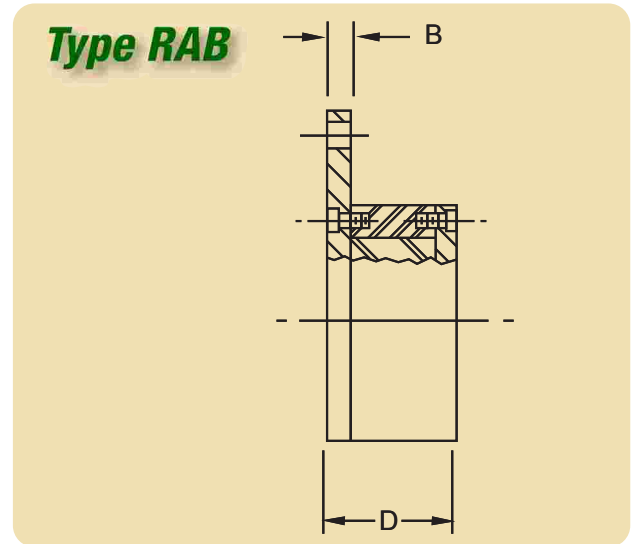
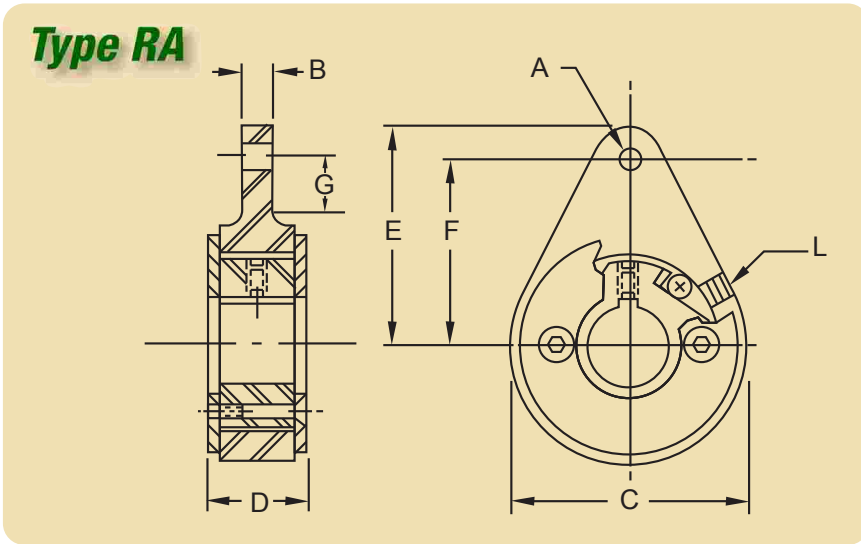
Ratchet Arm Assembly

For rotary arm actuation or backstop.

Very economical backstop for your conveyor system or use this device for rotary action in conjunction with a motor, hydraulic cylinder, pneumatic cylinder, or other mechanical means.

When attached correctly, these Ratched Arm Backstop Clutches can efficiently protect valuable product on any incline conveyors (not allowing the conveyor to back up), simply by mounting it on your primary drive shaft and attaching the ratchet arm end to a fixed position (see note below).

Inversely, when looking to drive through the clutch into the shaft there is no simpler and more compact indexing clutch than this. Due to an infinite number of potential engagement points on the circle (no cogs), these indexing clutches offer the ultimate flexibility in any application.



Assem. No.	A	B	C	D	E	F	G	L	Standard Bores	Rating	
										Torque Lbs./Ft.	Speed RPM
RA14	.250	1/4	1-7/8	13/16	1-3/4	1-1/2	7/16	8-32	3/8, 1/2, 5/8	14	1800
RA100	.316	5/16	3-3/4	1-3/8	3-7/16	3	1	1/4-28	3/4, 7/8, 1, 1-1/8, 1-1/4	100	1000
RAB200	13/32	3/8	4-1/2	2-3/8	4-1/4	3-5/8	-	1/4-20	1-1/2, 1-3/4, 2	200	800
RAB500	17/32	3/8	6	2-17/32	5-1/2	4-3/4	-	5/16-18	2-1/4, 2-1/2, 2-3/4	500	600